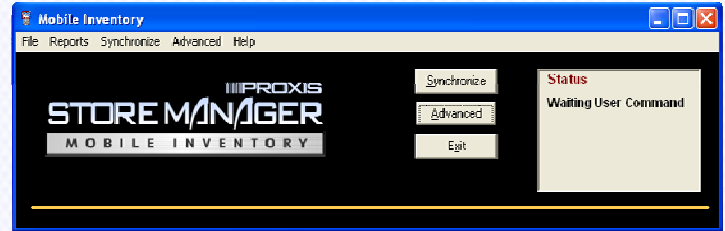


## Mobilize Inventory for Point of Sale!

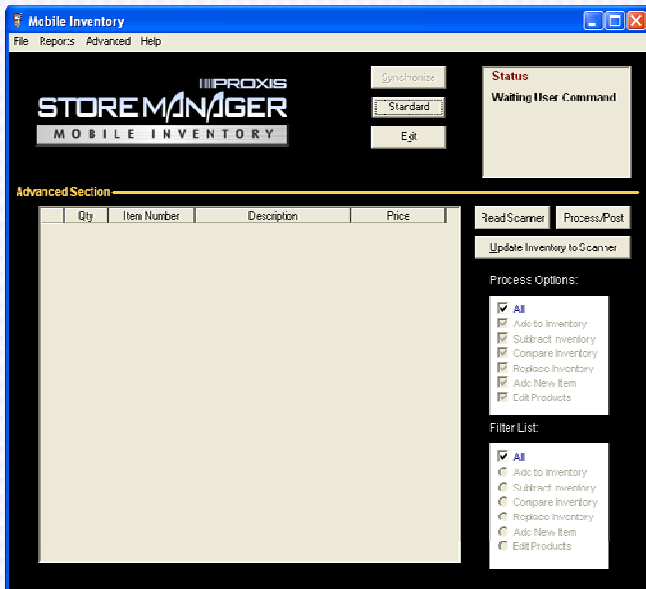
Control inventory from anywhere in the store or warehouse with precision and ease!

Mobile Inventory software, paired with the flexibility and accuracy of a mobile handheld barcode scanner, extends Store Manager software's functionality with a portable, powerful inventory management solution.

Our preconfigured Mobile Inventory Kits include all the software and hardware necessary for easy, hassle-free startup!



Standard View



Advanced View

## Get Control & Improve Operations!

Mobile Inventory for Store Manager streamlines inventory processes to improve profit margins and productivity. The mobile barcode scanner links to the POS computer, enabling you to:

- Scan new products into inventory at point of arrival
- Replace or update inventory quantities from anywhere in the store or warehouse
- Lookup or change item pricing on the fly
- Edit item description, cost, MSRP, price, quantity, location and vendor
- Facilitate accurate physical counts with comparative reporting
- Experience worry-free integration with Store Manager's product database
- Lookup item quantity on hand
- Synchronize to database with a single-button — no complicated data mapping
- Customize scanner settings for more control

## Integration has Never Been Easier!

Proxis Mobile Inventory for Store Manager delivers 360-degree integration! The wireless scanner, Mobile Inventory Software, and Store Manager product database communicate and exchange data with one-touch synchronization! Our preconfigured Kits enable easy set up and freedom of choice.

### Manage Inventory with an Xt50 Portable Barcode Scanner

Flexible wireless barcode scanning with user friendly menu and 2MB memory (15,000 products)

### Manage Inventory with a Symbol Palm Scanner

Laser scanning with LED touch screen control and 8MB memory

### Mobile Inventory Kit options:

1. Desktop Software and Xt50 Mobile barcode scanner with charging cradle & power supply.
2. Desktop Software and your choice of selected Symbol Palm barcode scanners (SPT 1550 or SPT 1800) with charging cradle and power supply.

### Requirements:

- Windows 98, 2000, or XP.
- PROXIS Store Manager point of sale software.
- POS-X Xt50 barcode scanner or Symbol Palm SPT 1550 or SPT 1800 barcode scanner.
- Symbol Palm scanner requires free Palm Desktop software.





**POS-X Xt50 Mobile Scanner**

**Xt50 PHYSICAL**

WEIGHT 135g (including battery)  
 DIMENSION (LxWxH) 122mm(L) x 56mm(W) x26mm (H)  
 COLOR Black

**OPERATION**

INTERFACE USB  
 OPERATIONAL BATTERY Li-ion 3.7v 700m-Ah  
 WORKING HOURS Over 100 hours  
 CPU 16-bit CMOS, low power consumption  
 PROGRAM MEMORY 1mb flash memory  
 DATA MEMORY 2mb SRAM  
 DISPLAY 100x64 graphic dots FSTN with backlit LED  
 KEYBOARD 21 rubber keys with backlit LED  
 BUZZER Programmable 1khz to 4 khz

**OPTICAL**

RESOLUTION 0.125mm (5mil) ~ 1.50mm (20mil)  
 READING RANGE 3cm - 29cm  
 SCAN RATE 100 scans/sec  
 DECODE UPC/EAN/JAN, Code 128, Code 39, Code 93, Interleaved 2 of 5, ISBN, Codebar, MSI Plessey

**ENVIROMENTAL**

OPERATING TEMPRATURE -20°C to 60°C  
 STORAGE TEMPRATURE -30°C to 70°C  
 HUMIDITY Non-condensed 5% to 95%  
 SHOCK RESISTANCE 1.2m drops onto concrete  
 EMC REGULATION FCC class-A and C-tick approved

**WARRANTY**

PARTS/LABOR 1 year



**Symbol SPT 1550 Mobile Scanner**

**SPT 1550 PHYSICAL**

WEIGHT 170.8g (including batteries)  
 DIMENSION (WxDxH) 81mm (W) x 140mm(L) x 17mm (D)  
 COLOR Dark Blue

**OPERATION**

INTERFACE Serial RS-232  
 OPERATION BATTERY 2 AAA or Symbol NIMH rechargeable pack  
 WORKING HOURS Over 40 hours  
 CPU Motorola Dragonball VZ-33 Mhz  
 PROGRAM MEMORY 4mb ROM memory  
 DATA MEMORY 8mb SDRAM  
 DISPLAY 160 x 160 LCD backlit touch screen  
 KEYBOARD LCD soft keyboard  
 OPERATING SYSTEM Palm OS

**OPTICAL**

DECODE 0.125mm (5mil) - 0.50 mm (20mil)  
 READING RANGE 5cm - 55cm  
 LASER CLASS CDRH Class II ,IEC 825 Class II  
 LASER TYPE 650 nm Laser Diode  
 DECODE UPC/EAN/JAN, Code 128, Code 39, Code 93, Interleaved 2 of 5, ISBN, Codebar, MSI Plessey

**ENVIROMENTAL**

OPERATING TEMPERATURE 10° C to 32° C  
 SHOCK RESISTANCE 1.2m drops onto concrete

**REGULATION**

UL 1950 , FCC class B, IEC, CDRH class II

**WARRANTY**

PARTS/LABOR 1 year